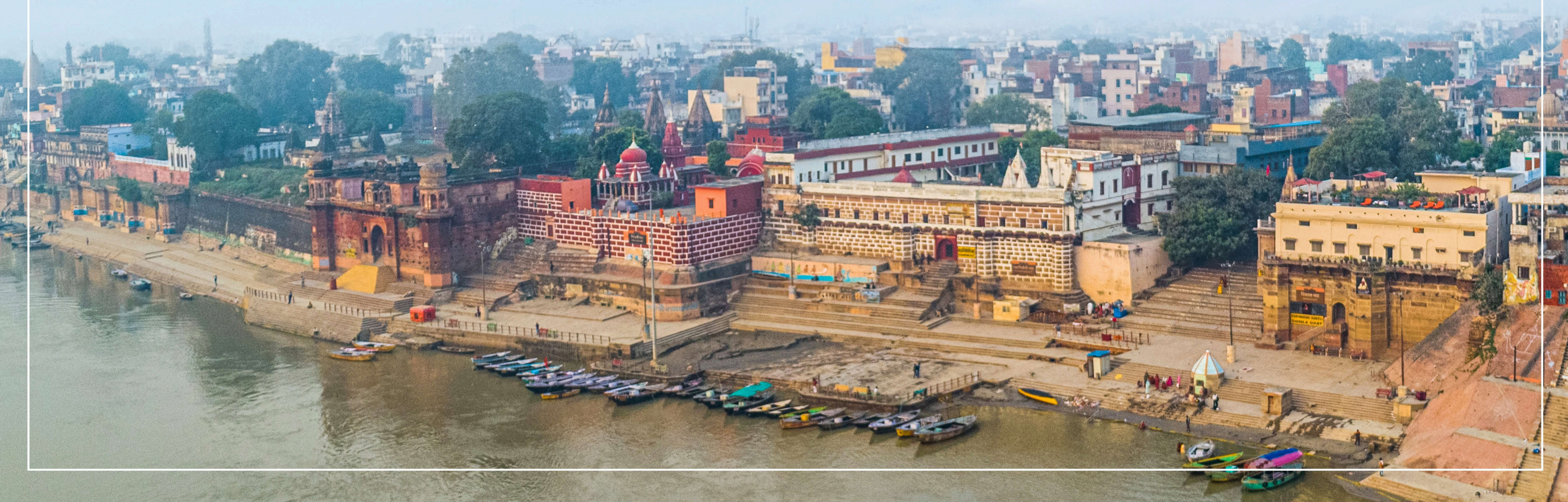




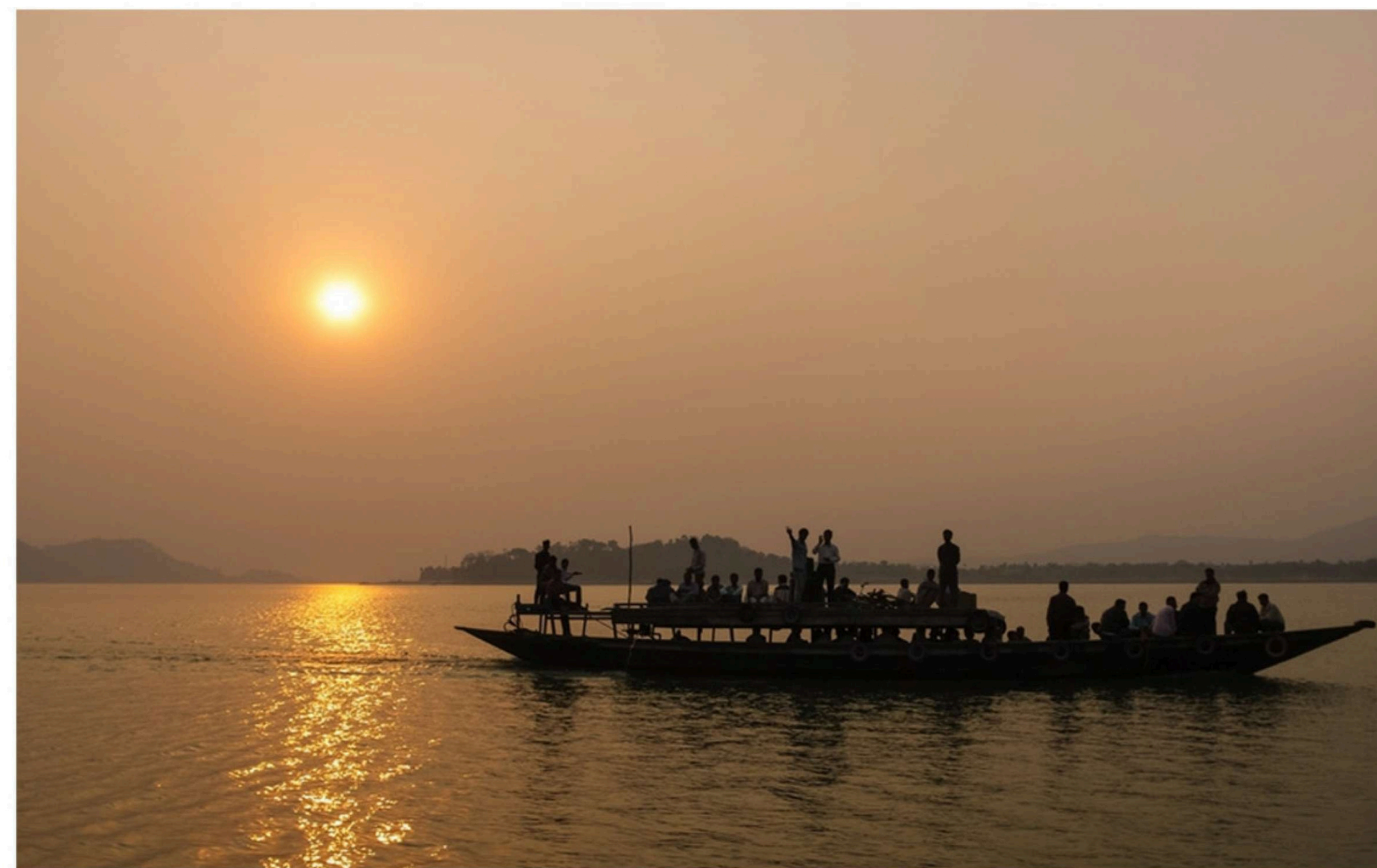
AMRITARA SURYAUDAY HAVELI

SHIVALA GHAT, VARANASI



PROPERTY DESCRIPTION

Amritara Suryaunday Haveli is Situated on the Shivala Ghats which is a reflection of the holy city Banaras. The haveli traces its history back to the early 20th century. Built originally for the royal family of Nepal as a retreat for the aged. The haveli has been refurbished and put together to give the surreal experience of the Banaras Ghats. Your stay begins with a 15mins boat ride upstream along the famous ghats of Banaras to reach the haveli. The haveli is also connected by small alleys and streets leading to the famous Kashi Vishwanath Temple which is only a 30 minutes walk from the property



Executive Room

Number of rooms - 4

Area - 250 sq ft



AMRITARA SURYAUDAY HAVELI

Ganges View Room

Number of Rooms - 9

Area : 300 sq ft



AMRITARA SURYAUDAY HAVELI

AMRITARA SURYAUDAY HAVELI



Shivala Suite

Number of Rooms-1

Area : 410 sq ft

AMRITARA SURYAUDAY HAVELI



Khana Pakana Covers- 12

"Khana Pakana" is a vegetarian multi-cuisine restaurant where patrons can embark on a gastronomic journey that spans continents. The menu features tantalizing Thai curries, hearty Italian pastas, and refreshing salads, complemented by local and Indian flavors. Enjoy a welcoming culinary experience in this diverse and inviting space.

Breakfast - **7:00 - 10:00**

Lunch - **12:00 - 3:00**

Dinner - **7:00-10:00**

AMRITARA SURYAUDAY HAVELI



Open courtyard

Covers - 14

"Khana Pakana" is a vegetarian multi-cuisine restaurant where patrons can embark on a gastronomic journey that spans continents. The menu features tantalizing Thai curries, hearty Italian pastas, and refreshing salads, complemented by local and Indian flavors. Enjoy a welcoming culinary experience in this diverse and inviting space.

Timings - 7:00am - 10:00pm

AMRITARA SURYAUDAY HAVELI



Rooftop candle light dinner

A personalized rooftop candlelight dinner, an enchanting evening crafted just for the two of you, promises to be a magical experience filled with love, warmth, and breathtaking views. Along with a selection of non-alcoholic drinks, chef's choice starters, Maharaja silver thali, dessert, and tea/coffee.

Need to pre book on special rates, cancellation rights are reserve with hotel management according to weather condition



ROOM FEATURES



WARDROBE



HAIRDRYER



HOT AND COLD WATER



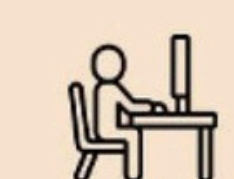
NON-SMOKING



ROOM HEATERS



MINI BAR



WORKING DESK



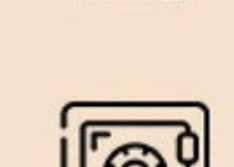
IRON & BOARD ON REQUEST



ROOM DIRECTORY



TEA/COFFEE MAKER



IN ROOM SAFE

HOTEL FEATURES



WIFI



RESTAURANT : **KHANA PAKANA**



FACILITIES : Ganges view, Living Room, Bathtub only at Shivala suite Washroom, Yoga, Ganga Aarti Darshan, Boat Pickup & Drop



LOCATION DETAILS



Lal Bahadur Shastri
28 KM



Chaudhary Charan Singh
4.5 KM



Varanasi Junction
5 KM



The Average temperature in
Varanasi

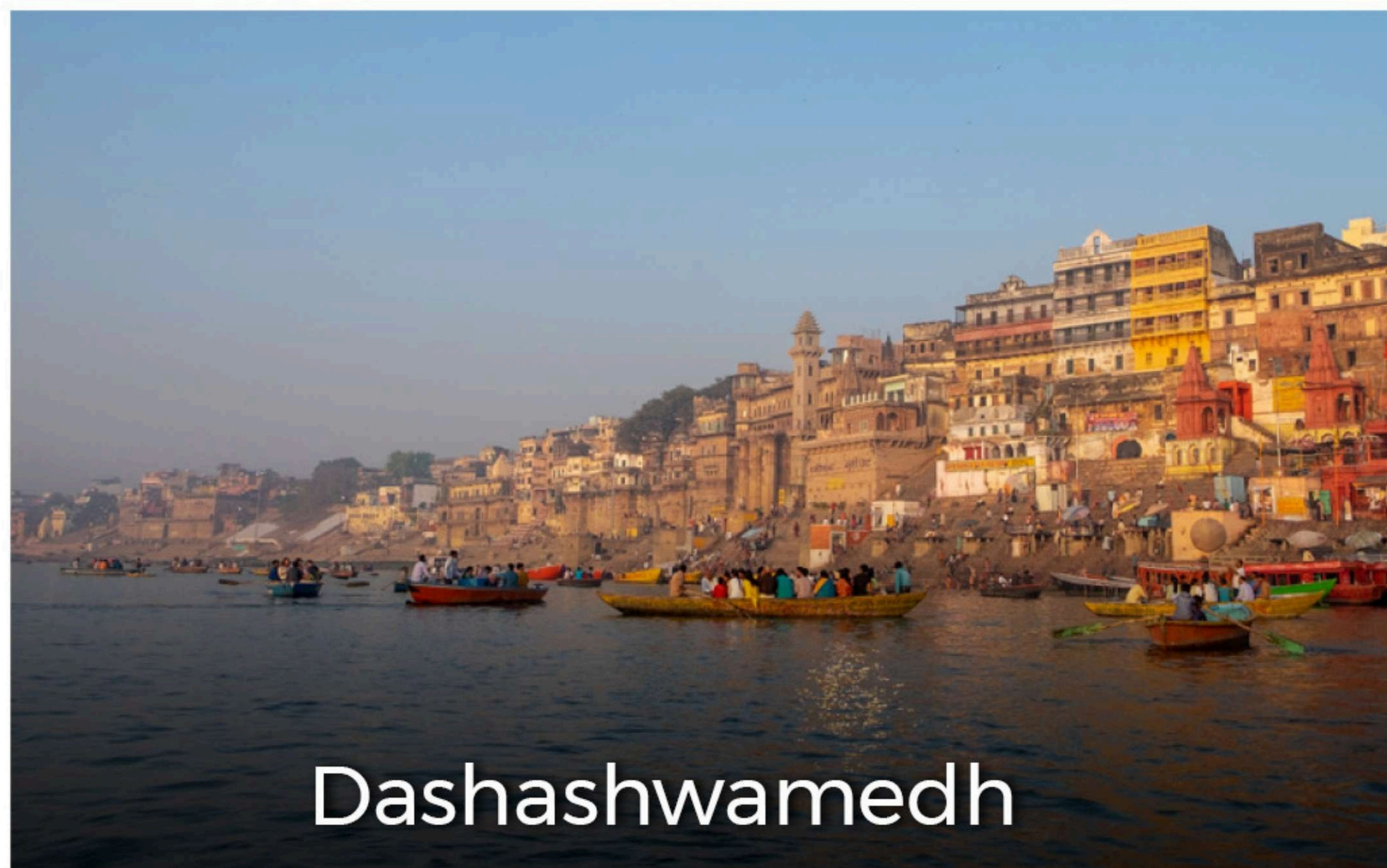
Jan-Apr : 23°C

May-Aug : 35°C

Sep-Dec : 28°C

NEARBY ATTRACTIONS

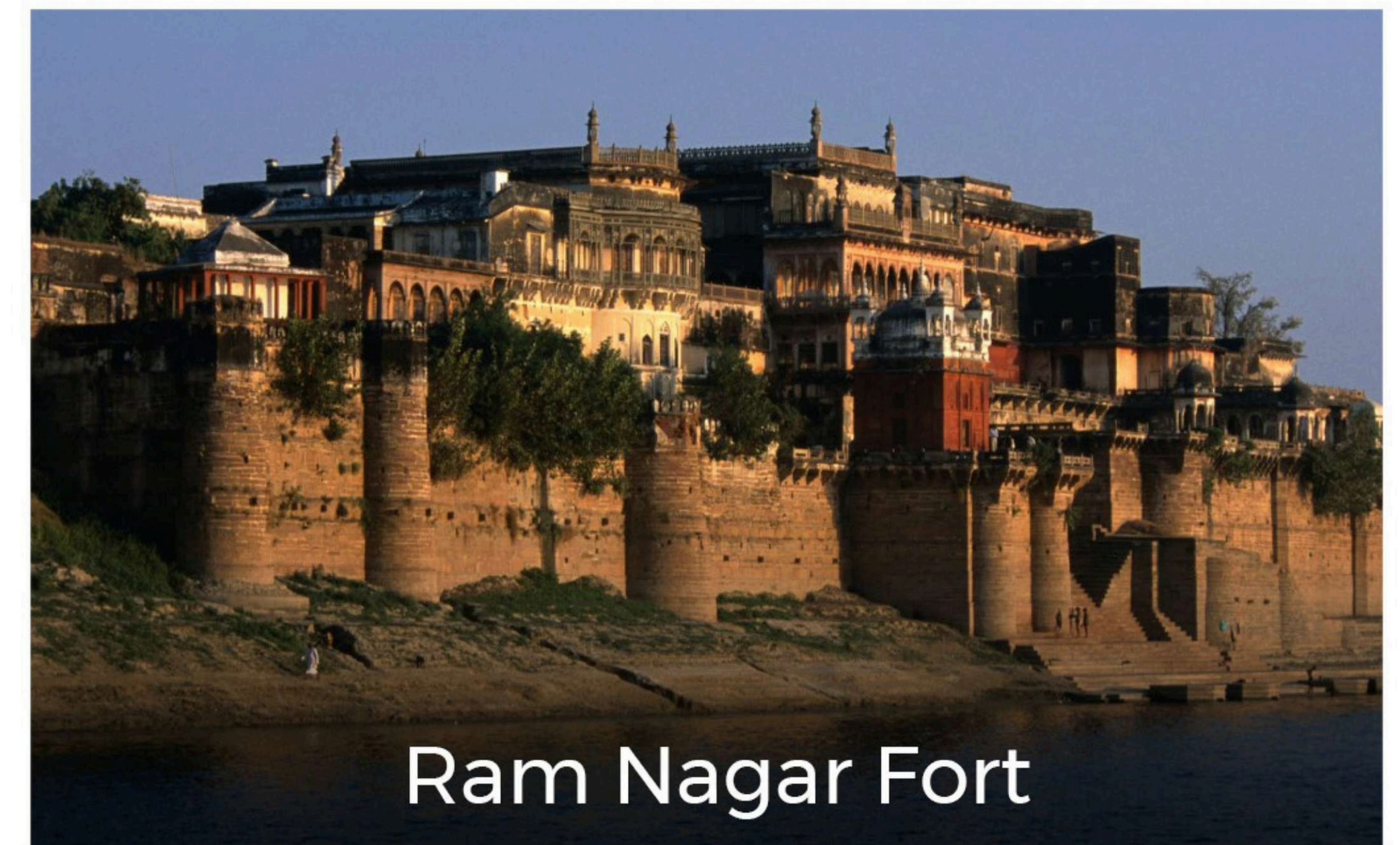
- Assi Ghat - 1.5 Km
- Sankat Mochan Mandir (Monkey Temple) - 1.5 Km
- Ganga Aarti at Dashashwamedh Ghat - 1.5 Km
- Banaras Hindi University (BHU) - 1.5 Km
- Kashi Vishwanath Temple - 02 Km
- Namoo Ghat (By Boat) - 5.5 km
- Kaal Bhairav Mandir - 05 Km
- Bharat Mata Mandir - 05 Km
- Banaras Loco Motive Works (BLW) - 07 Km
- Varanasi Junction - 05 Km
- Ram Nagar Fort - 10 km
- Sarnath - 20 Km



Dashashwamedh



Kashi Vishwanath Temple



Ram Nagar Fort

AMRITARA SURYAUDAY HAVELI



**B-4/25, NEPALI KOTHI, SHIVALA GHAT,
VARANASI - 221002**

Reservations Mail ID : reservations@amritara.co.in

Hotel Reservations Number	Hotel Front Office Number
011 4075 2200	+91-7800490390

WWW.AMRITARA.CO.IN